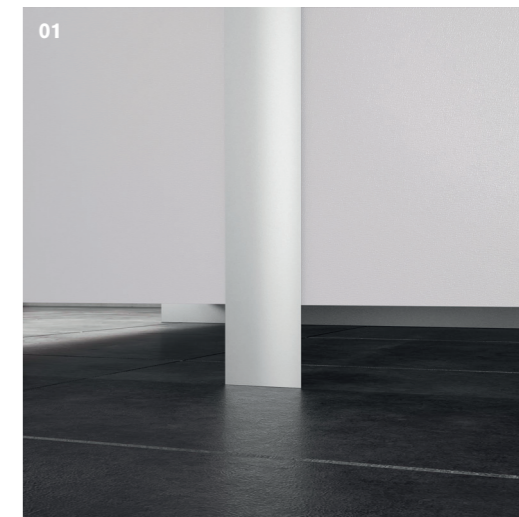


Fusion Bringing together cutting edge design, unrivalled performance and surprising affordability, Fusion is an innovation all of its own. With an ultra-strong metal frame and slimline pilasters that fix to the floor for added rigidity, Fusion combines strength and modernity in equal measure.

Fusion



Fusion



01 Floor fixed pilasters for added rigidity.

02 Discreet, slimline indicator bolt faceplate with emergency release facility.

See p34-35 for Fusion technical specifications.

Main image
Fusion MFC cubicles and Solid Surface WT3 profile washtrough.

Fusion



Main image

Fusion MFC cubicles and Solid Surface WT4 profile washtrough.

See p34-35 for Fusion technical specifications.

Key features

- Full satin anodised aluminium frame
- Floor fixed pilasters for added rigidity
- Uniform slimline pilasters and headrail
- Contemporary minimal design
- Sleek satin anodised aluminium fittings
- Complete colour flexibility
- Economical
- Full height option available for increased privacy

Case Study Dover Castle

Our metal-framed Fusion toilet cubicles bring English Heritage site Dover Castle cutting-edge washroom design and unrivalled performance.

Steeped in history, Dover Castle has stood on Kent's iconic White Cliffs for nine centuries. It's one of the most famous European fortresses, with an important place in British History.

With just shy of 370,000 people visiting the castle in 2019 alone, the English Heritage site required durable and hardwearing washroom solutions to withstand the demands of such high footfall.

Our ultra-strong metal-framed toilet cubicle range, Fusion, was specified for Dover Castle's washrooms. The metal frame fixes directly into floor mounting blocks, making Fusion toilet cubicles strong and secure.

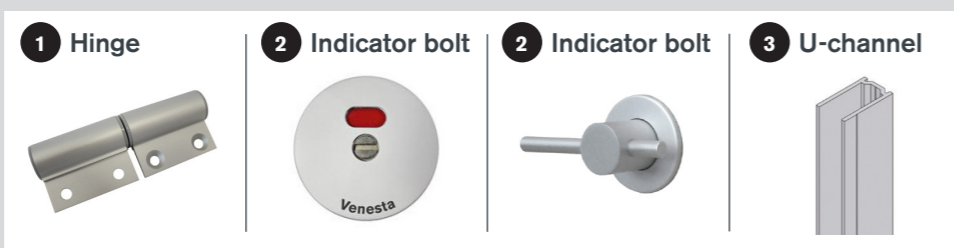
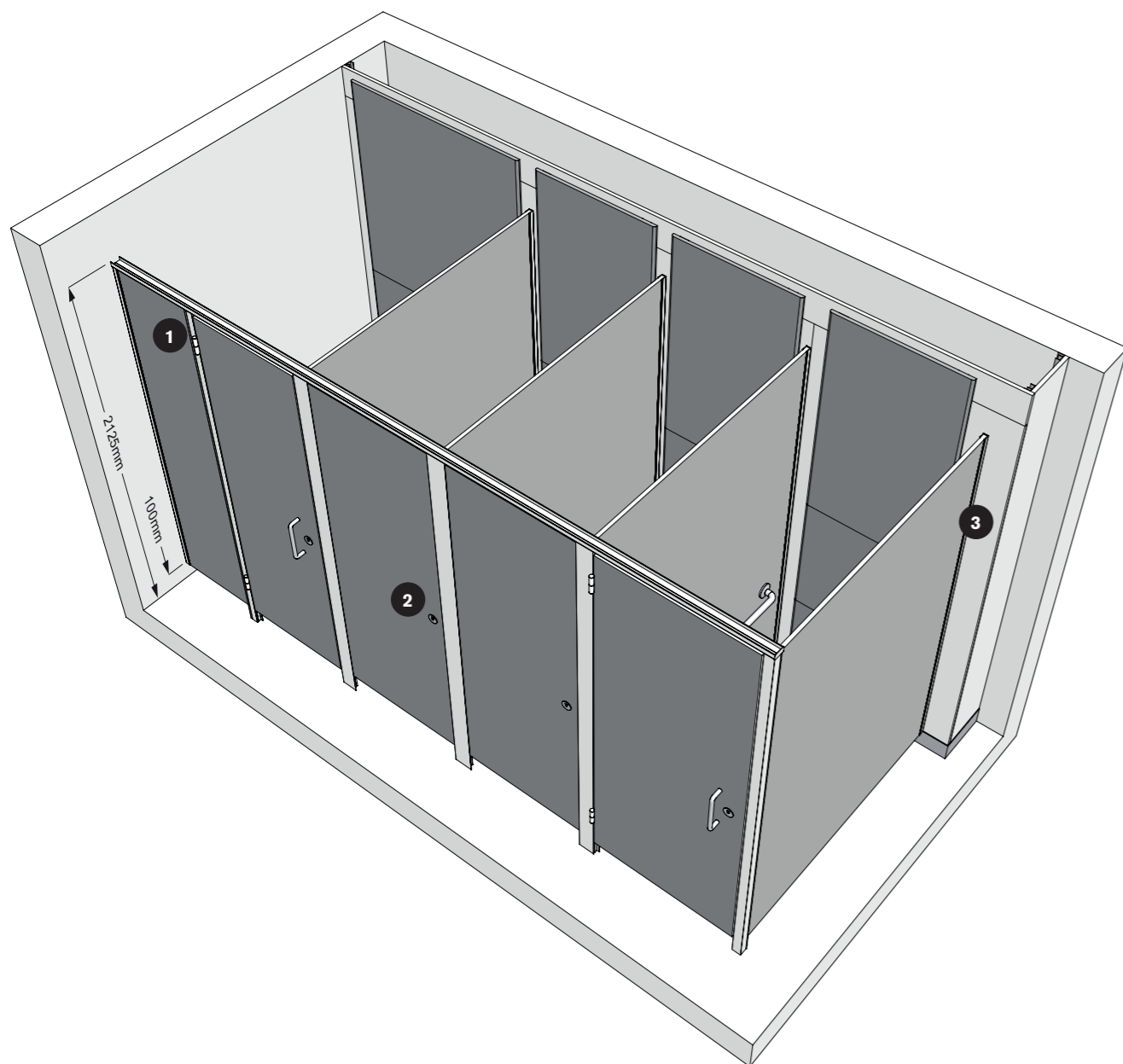
The cubicles were manufactured in Solid Grade Laminate (SGL) thanks to its durable and impact resistant properties. SGL is the ideal material for high footfall washroom environments as it's completely waterproof so can withstand regular and intensive cleaning regimes, to ensure that the highest levels of hygiene are met at all times.

Dover Castle had 34 on-trend laminate colours to choose from for their toilet cubicles. The female cubicles were finished in 'Merlot', while 'Duck Egg' was the choice for the male cubicles; with all partitions in neutral and complementing 'Cloud'.

Read the full case study at www.venesta.co.uk



Technical Specifying Fusion



Dimensions

Fusion	
Overall height	
MFC	2125mm
HPL	2125mm
SGL	2125mm
Maximum depth	
MFC	2090mm
HPL	2060mm
SGL	1930mm
Floor clearance	100mm
Minimum ceiling clearance	150mm
Fusion Full Height	
Maximum height	
MFC	2895mm
HPL	2895mm
SGL	2895mm
Maximum depth	
MFC	2090mm
HPL	2060mm
SGL	1930mm
Floor clearance	100mm
Minimum ceiling clearance	150mm

Performance

Available in three material options, Fusion is suitable for every type of wet or dry environment, allowing you to specify the most appropriate option to meet the site requirements and your budget.

MFC
For dry environments with low risk of vandalism. Panels are manufactured from 19mm nominal thickness high performance moisture-resistant melamine faced chipboard. Edges lipped with ABS.

HPL
For more heavily used washrooms, panels are heat, scratch and impact resistant. Manufactured from moisture-resistant chipboard faced with high pressure laminate, panels are 19mm nominal thickness. Edges lipped with ABS.

SGL
Solid grade laminate is extremely resistant to impact and all surfaces are impervious to water. Panels are 13mm nominal thickness with polished black radiused edges.

Detailing

Panels and doors
Available in MFC, HPL and SGL.

Colour finish
MFC, HPL and SGL
34 colours from the standard range.
Cubicle hardware
Satin anodised aluminium.

Edge treatment
MFC and HPL
Matching ABS lipping.
SGL
Polished black radiused edge.

Headrail
Satin anodised aluminium.

Pilasters
High strength, slimline extruded satin anodised aluminium, incorporating moulded channel to secure partition.

Cubicle hardware
Indicator bolt
Satin anodised flip indicator bolt with circular face plate, emergency release facility and matching keep.

Hinge
Rise and fall satin anodised aluminium hinges with adjustable self-lubricating cams to allow the door to fall closed, open or ajar. Lift off hinge to allow emergency access.

Pedestal
No pedestal required as the pilasters extend to floor level and are fixed to floor mounting blocks.

Fixings
Partition to wall: Continuous satin anodised aluminium U-channel.

Accessories
Coat hooks and toilet roll holders available.